





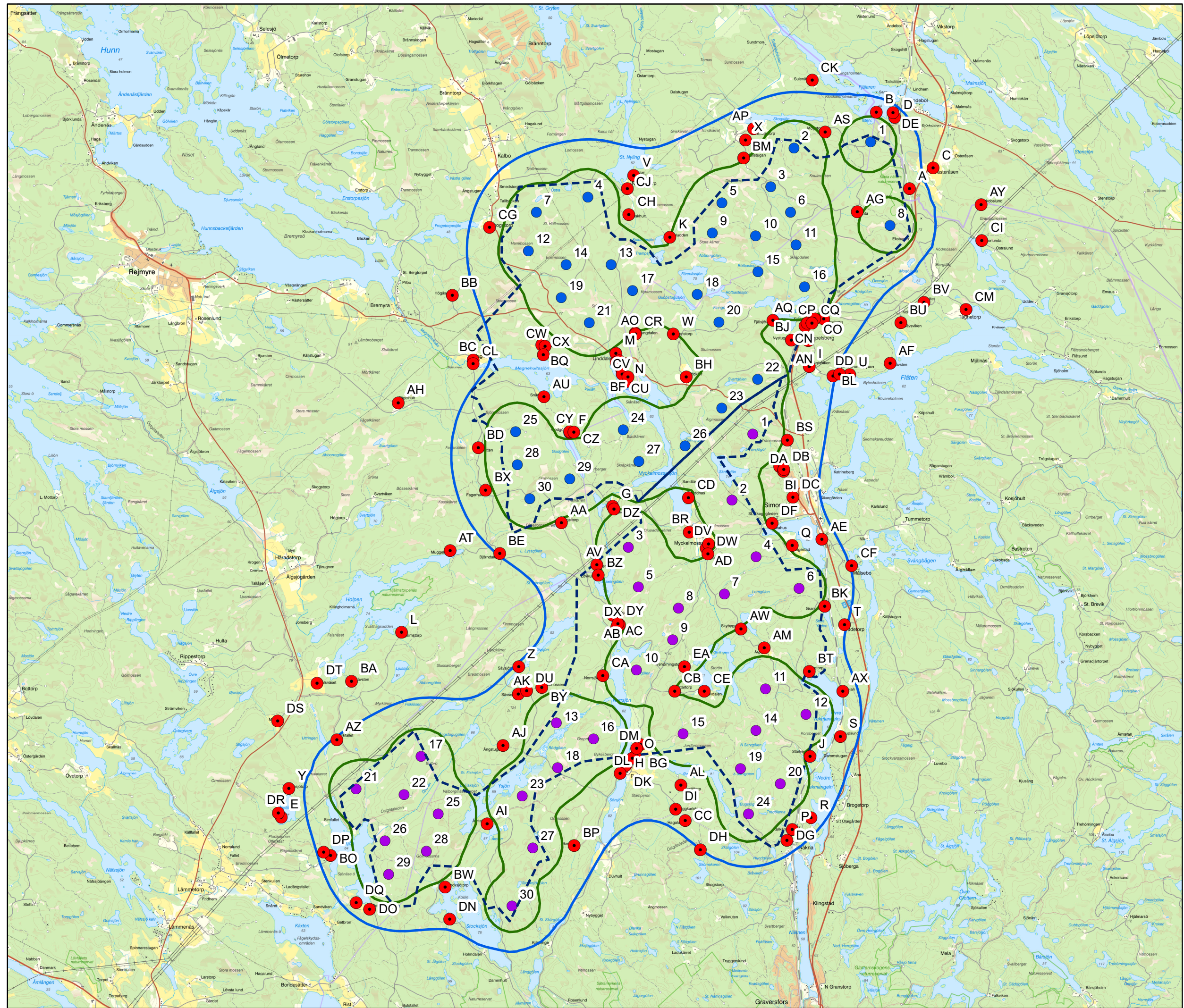


Klintaberget & Skybygget

-  Utredningsområde
-  Ljudkänsliga objekt
-  Exempel på verksplacering, KLB
-  Exempel på verksplacering, SKB

Ljudnivå

-  35 dB(A)
-  40 dB(A)



Sweco Energy AB/seaubo
 Datum: 2020-09-21
 © Lantmäteriet



DECIBEL - Main Result

Calculation: 20200824

Sound level

Noise sensitive area		Easting	Northing	Z	Emission height	Demands Noise	Sound level			Demands fulfilled ?
No.	Name						Noise	From WTGs	Distance to noise demand	
				[m]	[m]	[dB(A)]	[dB(A)]	[m]		
A	Noise sensitive point: Swedish - Night; Dwellings (241)	568905	6522963	59,7	1,5	40,0	36,8	303	Yes	
B	Noise sensitive point: Swedish - Night; Dwellings (242)	568240	6524512	45,6	1,5	40,0	38,5	102	Yes	
C	Noise sensitive point: Swedish - Night; Dwellings (243)	569382	6523385	55,6	1,5	40,0	33,8	834	Yes	
D	Noise sensitive point: Swedish - Night; Dwellings (244)	568610	6524402	48,2	1,5	40,0	37,3	183	Yes	
E	Noise sensitive point: Swedish - Night; Dwellings (245)	556231	6510286	81,6	1,5	40,0	32,3	1057	Yes	
F	Noise sensitive point: Swedish - Night; Dwellings (246)	562054	6518043	76,6	1,5	40,0	39,5	116	Yes	
G	Noise sensitive point: Swedish - Night; Dwellings (247)	562914	6516555	82,0	1,5	40,0	39,8	116	Yes	
H	Noise sensitive point: Swedish - Night; Dwellings (248)	563189	6511336	84,1	1,5	40,0	38,5	207	Yes	
I	Noise sensitive point: Swedish - Night; Dwellings (249)	566886	6519376	71,2	1,5	40,0	37,1	454	Yes	
J	Noise sensitive point: Swedish - Night; Dwellings (250)	566901	6511511	74,1	1,5	40,0	39,3	113	Yes	
K	Noise sensitive point: Swedish - Night; Dwellings (251)	564075	6521983	72,8	1,5	40,0	40,0	3	Yes	
L	Noise sensitive point: Swedish - Night; Dwellings (252)	558655	6514010	81,9	1,5	40,0	31,0	1965	Yes	
M	Noise sensitive point: Swedish - Night; Dwellings (253)	562978	6519647	74,7	1,5	40,0	39,3	116	Yes	
N	Noise sensitive point: Swedish - Night; Dwellings (254)	563191	6519068	66,7	1,5	40,0	38,5	300	Yes	
O	Noise sensitive point: Swedish - Night; Dwellings (255)	563374	6511507	94,0	1,5	40,0	38,5	271	Yes	
P	Noise sensitive point: Swedish - Night; Dwellings (256)	566539	6510040	64,5	1,5	40,0	37,1	274	Yes	
Q	Noise sensitive point: Swedish - Night; Dwellings (257)	566543	6515760	78,1	1,5	40,0	39,2	89	Yes	
R	Noise sensitive point: Swedish - Night; Dwellings (258)	566923	6510275	65,9	1,5	40,0	36,5	356	Yes	
S	Noise sensitive point: Swedish - Night; Dwellings (259)	567513	6511915	82,7	1,5	40,0	37,1	272	Yes	
T	Noise sensitive point: Swedish - Night; Dwellings (260)	567597	6514171	93,2	1,5	40,0	35,2	634	Yes	
U	Noise sensitive point: Swedish - Night; Dwellings (261)	567702	6519214	68,5	1,5	40,0	34,1	1246	Yes	
V	Noise sensitive point: Swedish - Night; Dwellings (262)	563341	6523236	63,6	1,5	40,0	37,0	440	Yes	
W	Noise sensitive point: Swedish - Night; Dwellings (263)	564139	6520030	82,7	1,5	40,0	39,7	51	Yes	
X	Noise sensitive point: Swedish - Night; Dwellings (264)	565594	6523948	67,0	1,5	40,0	38,0	280	Yes	
Y	Noise sensitive point: Swedish - Night; Dwellings (265)	56386	6510860	86,1	1,5	40,0	33,1	809	Yes	
Z	Noise sensitive point: Swedish - Night; Dwellings (266)	561021	6513316	96,3	1,5	40,0	35,2	765	Yes	
AA	Noise sensitive point: Swedish - Night; Dwellings (267)	561885	6516219	79,8	1,5	40,0	39,3	92	Yes	
AB	Noise sensitive point: Swedish - Night; Dwellings (268)	562919	6514363	86,0	1,5	40,0	39,6	61	Yes	
AC	Noise sensitive point: Swedish - Night; Dwellings (269)	563002	6514124	86,5	1,5	40,0	39,4	124	Yes	
AD	Noise sensitive point: Swedish - Night; Dwellings (270)	564804	6515714	89,0	1,5	40,0	39,7	113	Yes	
AE	Noise sensitive point: Swedish - Night; Dwellings (271)	567140	6515889	66,8	1,5	40,0	36,3	509	Yes	
AF	Noise sensitive point: Swedish - Night; Dwellings (272)	568517	6519443	69,6	1,5	40,0	32,3	1714	Yes	
AG	Noise sensitive point: Swedish - Night; Dwellings (273)	567854	6522500	84,4	1,5	40,0	39,4	88	Yes	
AH	Noise sensitive point: Swedish - Night; Dwellings (274)	558594	6518646	86,9	1,5	40,0	30,5	1849	Yes	
AI	Noise sensitive point: Swedish - Night; Dwellings (275)	560383	6510150	97,4	1,5	40,0	39,6	151	Yes	
AJ	Noise sensitive point: Swedish - Night; Dwellings (276)	560709	6511735	101,7	1,5	40,0	38,3	375	Yes	
AK	Noise sensitive point: Swedish - Night; Dwellings (277)	561012	6512771	104,1	1,5	40,0	36,7	365	Yes	
AL	Noise sensitive point: Swedish - Night; Dwellings (278)	564294	6510935	104,6	1,5	40,0	37,8	391	Yes	
AM	Noise sensitive point: Swedish - Night; Dwellings (279)	565977	6513705	84,0	1,5	40,0	39,0	173	Yes	
AN	Noise sensitive point: Swedish - Night; Dwellings (280)	566867	6519903	81,4	1,5	40,0	37,7	445	Yes	
AO	Noise sensitive point: Swedish - Night; Dwellings (281)	563368	6520050	73,4	1,5	40,0	39,8	34	Yes	
AP	Noise sensitive point: Swedish - Night; Dwellings (282)	565761	6524172	59,4	1,5	40,0	37,6	272	Yes	
AQ	Noise sensitive point: Swedish - Night; Dwellings (283)	566150	6520310	72,0	1,5	40,0	40,0	5	Yes	
AR	Noise sensitive point: Swedish - Night; Dwellings (284)	567176	6520340	78,1	1,5	40,0	38,6	144	Yes	
AS	Noise sensitive point: Swedish - Night; Dwellings (285)	567205	6524109	66,9	1,5	40,0	39,0	101	Yes	
AT	Noise sensitive point: Swedish - Night; Dwellings (286)	559637	6515665	83,4	1,5	40,0	32,6	1319	Yes	
AU	Noise sensitive point: Swedish - Night; Dwellings (287)	561530	6518766	67,0	1,5	40,0	38,0	294	Yes	
AV	Noise sensitive point: Swedish - Night; Dwellings (288)	562594	6515377	84,7	1,5	40,0	39,5	54	Yes	
AW	Noise sensitive point: Swedish - Night; Dwellings (289)	565506	6514084	87,6	1,5	40,0	39,8	44	Yes	
AX	Noise sensitive point: Swedish - Night; Dwellings (290)	567558	6512825	67,4	1,5	40,0	36,6	324	Yes	
AY	Noise sensitive point: Swedish - Night; Dwellings (291)	570352	6522640	74,6	1,5	40,0	30,4	1371	Yes	
AZ	Noise sensitive point: Swedish - Night; Dwellings (292)	557352	6511848	83,5	1,5	40,0	35,4	506	Yes	
BA	Noise sensitive point: Swedish - Night; Dwellings (293)	557646	6513027	82,9	1,5	40,0	31,7	1474	Yes	
BB	Noise sensitive point: Swedish - Night; Dwellings (294)	559680	6520810	73,2	1,5	40,0	33,2	1167	Yes	
BC	Noise sensitive point: Swedish - Night; Dwellings (295)	560106	6519507	67,7	1,5	40,0	34,1	1100	Yes	
BD	Noise sensitive point: Swedish - Night; Dwellings (296)	560205	6517741	92,0	1,5	40,0	38,5	134	Yes	
BE	Noise sensitive point: Swedish - Night; Dwellings (297)	560638	6515605	95,6	1,5	40,0	35,2	681	Yes	
BF	Noise sensitive point: Swedish - Night; Dwellings (298)	563093	6519342	66,3	1,5	40,0	38,5	436	Yes	
BG	Noise sensitive point: Swedish - Night; Dwellings (299)	563483	6511743	96,1	1,5	40,0	38,8	232	Yes	
BH	Noise sensitive point: Swedish - Night; Dwellings (300)	564404	6519165	80,7	1,5	40,0	39,3	167	Yes	
BI	Noise sensitive point: Swedish - Night; Dwellings (301)	566284	6517362	84,8	1,5	40,0	38,4	212	Yes	
BJ	Noise sensitive point: Swedish - Night; Dwellings (302)	566524	6519911	73,9	1,5	40,0	38,6	371	Yes	
BK	Noise sensitive point: Swedish - Night; Dwellings (303)	567192	6514543	67,2	1,5	40,0	38,9	86	Yes	
BL	Noise sensitive point: Swedish - Night; Dwellings (304)	567363	6519187	73,5	1,5	40,0	35,2	906	Yes	

To be continued on next page...

DECIBEL - Main Result

Calculation: 20200824

...continued from previous page

Noise sensitive area

No.	Name	Easting	Northing	Z	Emission height	Demands Noise	Sound level		Demands fulfilled ?
							From WTGs	Distance to noise demand	
						[dB(A)]	[dB(A)]		Noise
				[m]	[m]			[m]	
BM	Noise sensitive point: Swedish - Night; Dwellings (305)	565558	6523584	71,5	1,5	40,0	39,9	42	Yes
BN	Noise sensitive point: Swedish - Night; Dwellings (306)	566797	6520194	76,8	1,5	40,0	38,9	145	Yes
BO	Noise sensitive point: Swedish - Night; Dwellings (307)	557223	6509515	71,6	1,5	40,0	36,5	466	Yes
BP	Noise sensitive point: Swedish - Night; Dwellings (308)	562143	6509707	114,2	1,5	40,0	37,6	249	Yes
BQ	Noise sensitive point: Swedish - Night; Dwellings (309)	561490	6519818	76,5	1,5	40,0	38,3	284	Yes
BR	Noise sensitive point: Swedish - Night; Dwellings (310)	564464	6516039	76,3	1,5	40,0	39,2	355	Yes
BS	Noise sensitive point: Swedish - Night; Dwellings (311)	566446	6517894	66,5	1,5	40,0	39,0	97	Yes
BT	Noise sensitive point: Swedish - Night; Dwellings (312)	566883	6513229	71,0	1,5	40,0	38,3	214	Yes
BU	Noise sensitive point: Swedish - Night; Dwellings (313)	568733	6520262	68,2	1,5	40,0	32,9	1433	Yes
BV	Noise sensitive point: Swedish - Night; Dwellings (314)	569202	6520674	75,4	1,5	40,0	32,4	1164	Yes
BW	Noise sensitive point: Swedish - Night; Dwellings (315)	559535	6508871	83,6	1,5	40,0	38,6	161	Yes
BX	Noise sensitive point: Swedish - Night; Dwellings (316)	560354	6516885	93,9	1,5	40,0	38,5	138	Yes
BY	Noise sensitive point: Swedish - Night; Dwellings (317)	561487	6512897	103,6	1,5	40,0	38,2	170	Yes
BZ	Noise sensitive point: Swedish - Night; Dwellings (318)	562625	6515166	82,7	1,5	40,0	39,3	83	Yes
CA	Noise sensitive point: Swedish - Night; Dwellings (319)	562722	6513142	90,9	1,5	40,0	39,7	35	Yes
CB	Noise sensitive point: Swedish - Night; Dwellings (320)	564169	6512825	96,0	1,5	40,0	39,9	8	Yes
CC	Noise sensitive point: Swedish - Night; Dwellings (321)	564385	6510215	114,3	1,5	40,0	35,9	663	Yes
CD	Noise sensitive point: Swedish - Night; Dwellings (322)	564446	6516727	73,2	1,5	40,0	39,6	106	Yes
CE	Noise sensitive point: Swedish - Night; Dwellings (323)	564768	6512824	88,6	1,5	40,0	39,4	208	Yes
CF	Noise sensitive point: Swedish - Night; Dwellings (324)	567738	6515353	71,3	1,5	40,0	34,8	610	Yes
CG	Noise sensitive point: Swedish - Night; Dwellings (325)	560434	6522183	59,8	1,5	40,0	37,3	261	Yes
CH	Noise sensitive point: Swedish - Night; Dwellings (326)	563243	6522446	65,5	1,5	40,0	39,0	203	Yes
CI	Noise sensitive point: Swedish - Night; Dwellings (327)	570364	6521923	71,0	1,5	40,0	30,3	1356	Yes
CJ	Noise sensitive point: Swedish - Night; Dwellings (328)	563213	6522968	64,1	1,5	40,0	38,2	210	Yes
CK	Noise sensitive point: Swedish - Night; Dwellings (329)	566942	6525153	56,2	1,5	40,0	33,7	857	Yes
CL	Noise sensitive point: Swedish - Night; Dwellings (330)	560104	6519432	64,5	1,5	40,0	34,2	1037	Yes
CM	Noise sensitive point: Swedish - Night; Dwellings (331)	570046	6520527	67,8	1,5	40,0	29,9	1764	Yes
CN	Noise sensitive point: Swedish - Night; Dwellings (332)	566943	6520322	84,4	1,5	40,0	39,5	56	Yes
CO	Noise sensitive point: Swedish - Night; Dwellings (333)	566993	6520339	81,7	1,5	40,0	39,4	59	Yes
CP	Noise sensitive point: Swedish - Night; Dwellings (334)	566842	6520258	85,8	1,5	40,0	39,2	92	Yes
CQ	Noise sensitive point: Swedish - Night; Dwellings (335)	566938	6520255	83,5	1,5	40,0	39,0	115	Yes
CR	Noise sensitive point: Swedish - Night; Dwellings (336)	563377	6520030	74,4	1,5	40,0	39,7	56	Yes
CS	Noise sensitive point: Swedish - Night; Dwellings (337)	562988	6519456	68,9	1,5	40,0	38,6	285	Yes
CT	Noise sensitive point: Swedish - Night; Dwellings (338)	563050	6519498	75,5	1,5	40,0	38,6	280	Yes
CU	Noise sensitive point: Swedish - Night; Dwellings (339)	563109	6519224	65,2	1,5	40,0	38,5	458	Yes
CV	Noise sensitive point: Swedish - Night; Dwellings (340)	563226	6519170	71,6	1,5	40,0	38,5	401	Yes
CW	Noise sensitive point: Swedish - Night; Dwellings (341)	561554	6519783	74,2	1,5	40,0	38,4	268	Yes
CX	Noise sensitive point: Swedish - Night; Dwellings (342)	561517	6519618	65,8	1,5	40,0	37,7	416	Yes
CY	Noise sensitive point: Swedish - Night; Dwellings (343)	562051	6518064	76,0	1,5	40,0	39,5	137	Yes
CZ	Noise sensitive point: Swedish - Night; Dwellings (344)	562134	6518048	82,6	1,5	40,0	39,4	118	Yes
DA	Noise sensitive point: Swedish - Night; Dwellings (345)	566367	6517261	79,2	1,5	40,0	37,7	341	Yes
DB	Noise sensitive point: Swedish - Night; Dwellings (346)	566369	6517302	82,3	1,5	40,0	37,8	316	Yes
DC	Noise sensitive point: Swedish - Night; Dwellings (347)	566555	6516740	88,1	1,5	40,0	36,9	581	Yes
DD	Noise sensitive point: Swedish - Night; Dwellings (348)	567495	6519229	72,2	1,5	40,0	34,8	1040	Yes
DE	Noise sensitive point: Swedish - Night; Dwellings (349)	568571	6524497	45,7	1,5	40,0	36,7	234	Yes
DF	Noise sensitive point: Swedish - Night; Dwellings (350)	566135	6516212	69,0	1,5	40,0	39,4	74	Yes
DG	Noise sensitive point: Swedish - Night; Dwellings (351)	566435	6509814	82,5	1,5	40,0	36,4	359	Yes
DH	Noise sensitive point: Swedish - Night; Dwellings (352)	564687	6509628	114,0	1,5	40,0	35,0	642	Yes
DI	Noise sensitive point: Swedish - Night; Dwellings (353)	564188	6510447	115,2	1,5	40,0	36,1	830	Yes
DJ	Noise sensitive point: Swedish - Night; Dwellings (354)	563319	6511472	90,4	1,5	40,0	38,5	235	Yes
DK	Noise sensitive point: Swedish - Night; Dwellings (355)	563169	6511317	84,2	1,5	40,0	38,5	202	Yes
DL	Noise sensitive point: Swedish - Night; Dwellings (356)	563069	6511164	84,6	1,5	40,0	38,2	233	Yes
DM	Noise sensitive point: Swedish - Night; Dwellings (357)	563402	6511671	95,9	1,5	40,0	38,7	232	Yes
DN	Noise sensitive point: Swedish - Night; Dwellings (358)	559629	6508225	84,6	1,5	40,0	35,8	742	Yes
DO	Noise sensitive point: Swedish - Night; Dwellings (359)	558014	6508424	72,5	1,5	40,0	37,1	241	Yes
DP	Noise sensitive point: Swedish - Night; Dwellings (360)	557083	6509580	76,4	1,5	40,0	35,8	594	Yes
DQ	Noise sensitive point: Swedish - Night; Dwellings (361)	557746	6508562	77,4	1,5	40,0	36,6	299	Yes
DR	Noise sensitive point: Swedish - Night; Dwellings (362)	556170	6510367	83,0	1,5	40,0	32,1	1093	Yes
DS	Noise sensitive point: Swedish - Night; Dwellings (363)	556158	6512227	87,9	1,5	40,0	30,1	1544	Yes
DT	Noise sensitive point: Swedish - Night; Dwellings (364)	556950	6512991	82,2	1,5	40,0	30,4	1716	Yes
DU	Noise sensitive point: Swedish - Night; Dwellings (365)	561182	6512832	100,9	1,5	40,0	37,3	292	Yes
DV	Noise sensitive point: Swedish - Night; Dwellings (366)	564855	6515798	88,4	1,5	40,0	39,6	127	Yes
DW	Noise sensitive point: Swedish - Night; Dwellings (367)	564840	6515591	87,4	1,5	40,0	40,0	7	Yes
DX	Noise sensitive point: Swedish - Night; Dwellings (368)	563052	6514168	91,9	1,5	40,0	39,6	57	Yes

To be continued on next page...

DECIBEL - Main Result

Calculation: 20200824

...continued from previous page

Noise sensitive area

No.	Name	Easting	Northing	Z	Imission height	Demands Noise	Sound level From WTGs	Distance to noise demand	Demands fulfilled ?
				[m]	[m]	[dB(A)]	[dB(A)]	[m]	Noise
DY	Noise sensitive point: Swedish - Night; Dwellings (369)	563022	6514192	95,2	1,5	40,0	39,7	67	Yes
DZ	Noise sensitive point: Swedish - Night; Dwellings (370)	562947	6516499	85,7	1,5	40,0	39,8	51	Yes
EA	Noise sensitive point: Swedish - Night; Dwellings (377)	564363	6513320	91,4	1,5	40,0	41,2	-209	No

Distances (m)

NSA	WTG																					
	1	2	3	4	5	6	7	8	9	10	11	12	13	14	15	16	17	18	19	20	21	22
A	1227	9885	7096	4914	7749	2553	2447	7001	2476	3796	842	9337	3482	7364	9015	5954	9674	4692	2894	3248	5824	7551
B	615	10475	6980	5900	8524	3132	2660	7185	1820	3619	2308	9728	4008	7384	9649	6101	10156	5298	3809	3494	6739	8200
C	1364	10521	7659	5542	8384	3171	3013	7606	2841	4321	1455	9965	4105	7949	9651	6551	10307	5325	3530	3837	6455	8188
D	694	10646	7269	5962	8649	3252	2840	7425	2130	3893	2185	9938	4156	7653	9809	6342	10349	5445	3867	3690	6824	8353
E	18083	8153	12539	13054	10177	15530	15957	11755	17006	15251	17123	9100	14619	11904	8968	12770	8559	13331	15035	15134	12128	10423
F	8440	1556	3389	3937	1508	5931	6296	2255	7308	5558	7689	1097	4998	2729	929	3132	1242	3744	5577	5457	3102	1076
G	9011	1676	4966	3892	1053	6447	6942	3738	8105	6509	7962	2470	5576	4338	1033	4373	2099	4294	5889	6173	2965	1559
H	13505	5718	10168	8225	6133	11042	11642	8958	12902	11505	12114	7087	10309	9521	5890	9574	6448	9132	10303	10990	7457	6763
I	4698	6237	5323	1077	3936	2472	3145	4528	4423	3746	3275	6073	2183	5199	5343	3885	6217	2035	1618	2852	1958	3968
J	12457	7685	11076	7685	6883	10326	10994	9822	12282	11309	10829	8846	9842	10532	7414	10059	8342	8955	9481	10559	7253	7592
K	4483	5981	2170	3361	4563	2545	2482	2369	3080	1255	4441	5009	1902	2513	5275	1315	5525	1972	2888	1724	3596	3997
L	13697	3744	8130	8817	5906	11161	11559	7312	12580	10813	12826	4660	10238	7485	4596	8326	4115	8958	10717	10727	7890	6061
M	6680	3407	2047	2909	2233	4244	4533	815	5482	3711	6100	2568	3310	1571	2700	1307	3001	2174	4039	3681	2407	1555
N	6910	3054	2657	2649	1625	4402	4767	1409	5805	4093	6182	2450	3468	2148	2265	1845	2761	2224	4078	3933	1996	971
O	13280	5625	10023	8005	5958	10823	11427	8806	12690	11307	11880	6987	10097	9380	5762	9403	6355	8928	10080	10782	7246	6597
P	13958	8518	12271	9109	8042	11793	12457	11012	13748	12718	12338	9773	11277	11696	8380	11337	9214	10340	10954	11994	8618	8751
Q	8299	5383	7282	3435	3535	6073	6737	6089	8028	7063	6752	6042	5579	6844	4697	6077	5788	4751	5236	6296	3125	4139
R	13686	8584	12204	8914	7985	11562	12229	10946	13517	12534	12050	9810	11073	11642	8400	11229	9269	10171	10717	11791	8461	8696
S	12009	7894	11010	7400	6880	9959	10631	9767	11911	11027	10353	8987	9528	10494	7545	9926	8520	8712	9106	10242	7046	7581
T	9751	6842	9182	5254	5299	7725	8398	7979	9672	8861	8100	7696	7337	8731	6283	7983	7352	6610	6868	8045	5025	5950
U	4713	6924	6141	1865	4602	2835	3495	5360	4712	4321	3112	6843	2788	6029	6034	4702	6952	2847	1999	3384	2673	4708
V	4829	6850	2263	4812	5773	3562	3247	3104	3276	1864	5267	5696	3170	2871	6258	2327	6293	3424	4113	2746	5019	5141
W	5559	4402	2578	1927	2659	3063	3416	1710	4475	2824	4888	3742	2126	2380	3590	1204	4103	952	2817	2585	1781	2180
X	2529	8441	4408	4832	6831	2349	1712	4847	989	1356	3389	7493	2664	4894	7701	3798	8006	3713	3189	1947	5429	6348
Y	17551	7608	11959	12556	9667	15002	15420	11187	16458	14696	16614	8531	14987	11326	8435	12208	7998	12801	14520	14594	11628	9893
Z	12753	3405	8171	7545	4804	10190	10693	7092	11851	10220	11634	4747	9326	7499	3933	7932	4082	8045	9600	9922	6638	5227
AA	9901	808	5213	4906	1996	7342	7794	4083	8902	7224	8938	2064	6441	4548	909	4904	1479	5150	6841	6991	3978	2254
AB	10871	2886	7131	5584	3145	8335	8888	5919	10107	8602	9642	4187	7526	6488	2886	6558	3595	6287	7674	8173	4719	3742
AC	11043	3129	7379	5748	3369	8514	9076	6165	10302	8813	9791	4437	7716	6737	3139	6792	3842	6485	7841	8369	4896	3977
AD	8840	3696	6378	3562	2215	6381	6992	5124	8264	6971	7487	4507	5679	5839	3093	5404	4167	4567	5637	6376	2843	2915
AE	8079	5951	7575	3485	4015	5967	6638	6416	7919	7083	6477	6553	5559	7176	5239	6310	6330	4853	5114	6268	3336	4580
AF	4482	7767	6837	2697	5444	3054	3659	6127	4761	4692	2776	7685	3249	6772	6878	5404	7798	3556	2322	3740	3520	5554
AG	1434	8784	5975	3933	6693	1407	1352	5853	1819	2741	712	8202	2340	6225	7922	4809	8551	3573	1848	2113	4815	6458
AH	10886	3281	4381	7261	4994	8632	8797	4178	9490	7671	10540	2435	7723	3908	3777	5237	2704	6668	8522	7953	6523	4568
AI	15786	6620	11393	10501	7929	13242	13781	10322	14976	13394	14550	7933	12414	10721	7159	11152	7273	11152	12591	13040	9633	8410
AJ	14253	5008	9779	8994	6349	11699	12223	8704	13403	11799	13068	6332	10855	9107	5543	9538	5670	9584	11074	11469	8108	6809
AK	13214	3950	8714	7978	5286	10655	11169	7629	12340	10725	12062	5292	9802	8042	4464	8458	4627	8526	10046	10407	7080	5734
AL	13526	6533	10749	8332	6583	11142	11771	9510	13052	11772	12046	7869	10477	10124	6575	10022	7257	9370	10360	11178	7649	7258
AM	10427	5607	8701	5420	4532	8154	8808	7449	10101	9015	8884	6647	7593	8166	5203	7680	6204	6633	7332	8309	4912	5237
AN	4198	6463	5125	1290	4202	1947	2620	4436	3897	3280	2840	6190	1727	5065	5570	3691	6387	1845	1092	2365	2219	4151
AO	6123	3954	1962	2639	2587	3705	3977	947	4922	3159	5580	3125	2775	1655	3220	861	3561	1706	3546	3124	2309	1965
AP	2376	8719	4674	5050	7097	2490	1831	5125	895	1625	3371	7772	2877	5166	7976	4077	8285	3960	3342	2160	5668	6619
AQ	4103	6082	4323	1228	3927	1953	2215	3705	3503	2583	3035	5659	1031	4298	5202	2897	5924	1091	932	1738	2050	3744
AR	3691	6951	5313	1808	4710	1594	2259	4731	3500	3114	2304	6623	1636	5317	6060	3901	6848	2117	758	2166	2736	4626
AS	940	9497	5875	5170	7635	2351	1758	6118	711	2529	2296	8695	3123	6290	8692	5036	9145	4394	3146	2525	5947	7262
AT	11830	1920	6222	7101	4212	9314	9686	5388	10679	8902	11031	2737	8384	5571	2811	6406	2200	7117	8916	8846	6187	4256
AU	8361	2072	2702	4324	2317	5939	6217	1756	7115	5310	7787	907	5005	2030	1731	2790	1470	3839	5709	5363	3593	1732
AV	10166	1899	6086	4956	2253	7606	8122	4889	9303	7726	9045	3145	6754	5437	1821	5579	2579	5483	7007	7368	4045	2774
AW	10166	5006	8151	5049	3958	7828	8472	6895	9762	8603	8672	6043	7220	7604	4599	7167	5599	6206	7025	7933	4473	4666
AX	11097	7414	10258	6528	6199	9057	9729	9026	11007	10151	9443	8426	8642	9765	6984	9129	8001	7857	8202	9354	6215	6887
AY	2565	10865	8463	5722	8631	3823	3852	8256	3953	5233	1890	10451	4701	8681	9977	7246	10728	5797	3928	4597	6651	8533
AZ	16170	6232	10640	11178	8287	13621	14041	9837	15084	13328	15234	7184	12707	10000	7054	10848	6637	11420	13139	13216	10250	8512
BA	15105	5153	9454	10212	7302	12570</																

DECIBEL - Main Result

Calculation: 20200824

...continued from previous page

WTG																						
NSA	1	2	3	4	5	6	7	8	9	10	11	12	13	14	15	16	17	18	19	20	21	22
BL	4782	6598	5836	1525	4280	2749	3420	5034	4669	4150	3242	6504	2597	5709	5707	4398	6617	2547	1894	3229	2339	4372
BM	2585	8111	4179	4470	6474	2045	1440	4551	1033	1006	3251	7187	2306	4636	7362	3490	7688	3347	2869	1590	5062	5998
BN	3944	6552	4978	1437	4323	1649	2322	4352	3601	2998	2652	6217	1455	4954	5663	3554	6444	1740	797	2074	2359	4225
BO	18055	8246	12829	12905	10095	15491	15958	11950	17061	15350	16994	9327	14601	12176	9000	12921	8738	13311	14939	15157	11990	10420
BP	15409	7064	11726	10116	7866	12925	13513	10561	14761	13309	14040	8439	12168	11063	7408	11264	7777	10963	12203	12837	9321	8450
BQ	7793	3114	1685	4405	3061	5508	5684	1055	6448	4622	7419	1834	4602	1025	2761	2128	2470	3599	5426	4836	3844	2375
BR	8678	3289	5939	3376	1752	6181	6772	4682	8030	6672	7387	4049	5436	5390	2647	5004	3729	4277	5470	6120	2585	2456
BS	6243	5332	5700	1370	3031	3943	4603	4649	5895	4965	4793	5491	3454	5397	4469	4345	5476	2754	3116	4168	1479	3323
BT	10750	6627	9558	5985	5454	8608	9276	8317	10563	9612	9136	7647	8133	9048	6204	8468	7217	7277	7762	8849	5598	6149
BU	3697	8286	6858	3110	5982	2637	3158	6288	4137	4348	1971	8081	3065	6876	7392	5456	8254	3674	2079	3417	4006	6007
BV	3409	8887	7266	3703	6591	2834	3257	6769	4077	4548	1694	8649	3411	7326	7993	5890	8839	4161	2436	3657	4610	6597
BW	17317	8027	12795	12035	9441	14770	15305	11759	16493	14894	16085	9301	13937	12124	8617	12618	8651	12671	14124	14558	11165	9904
BX	10472	908	4826	5924	3145	7981	8325	3973	9289	7501	9745	1322	7045	4169	1707	4997	818	5799	7631	7478	5041	3028
BY	12856	3824	8548	7596	4969	10303	10832	7429	12019	10434	11672	5192	9464	7879	4253	8218	4528	8197	9675	10083	6709	5455
BZ	10328	2073	6299	5098	2440	7771	8294	5101	9482	7916	9186	3342	6926	5651	2032	5785	2766	5659	7160	7546	4194	2977
CA	12045	3865	8323	6744	4382	9524	10091	7127	11320	9833	10766	5227	8733	7671	4029	7790	4594	7506	8840	9389	5905	4974
CB	11767	4865	8881	6515	4695	9334	9950	7636	11223	9899	10349	6144	8636	8266	4785	8129	5568	7502	8575	9330	5793	5376
CC	14194	7217	11472	9025	7309	11830	12463	10234	13748	12485	12693	8563	11177	10846	7285	10747	7944	10082	11041	11881	8357	7984
CD	8067	3200	5313	2771	1242	5548	6125	4063	7373	5989	6832	3735	4779	4787	2431	4332	3518	3600	4864	5455	1933	1902
CE	11581	5247	9049	6389	4824	9197	9828	7794	11111	9861	10113	6478	8541	8452	5080	8214	5931	7456	8413	9246	5727	5524
CF	8564	6634	8376	4221	4783	6577	7250	7220	8515	7779	6910	7302	6236	7979	5959	7101	7049	5603	5718	6936	4128	5366
CG	7880	5529	1715	6212	5598	6192	6077	2780	6343	4712	8076	4153	5486	2021	5319	3151	4817	5004	6464	5368	5931	4892
CH	5094	6071	1624	4218	4987	3428	3260	2324	3587	1891	5271	4944	2848	2166	5465	1539	5527	2832	3831	2592	4331	4348
CI	2994	10501	8403	5321	8231	3749	3904	8090	4228	5299	1878	10168	4559	8566	9609	7120	10407	5555	3696	4566	6244	8184
CJ	4999	6556	1973	4656	5509	3587	3323	2811	3455	1928	5349	5399	3120	2575	5969	2061	5996	3265	4084	2756	4818	4869
CK	1716	10182	6206	6131	8447	3336	2692	6643	1415	3073	3326	9279	4009	6701	9413	5582	9775	5230	4165	3343	6860	8019
CL	9184	2948	2739	5744	3878	6941	7095	2485	7797	5975	8856	1614	6039	2219	3024	3536	2219	5027	6863	6252	5090	3305
CM	3890	9591	8121	4435	7277	3670	4054	7605	4766	5376	2286	9417	4268	8173	8698	6741	9580	4993	3292	4499	5316	7331
CN	3776	6744	5090	1630	4516	1547	2220	4498	3486	2980	2461	6398	1466	5086	5854	3674	6630	1884	687	2041	2552	4414
CO	3744	6795	5135	1676	4566	1542	2214	4548	3475	2998	2416	6451	1493	5135	5906	3721	6683	1935	684	2056	2600	4466
CP	3868	6624	5006	1515	4398	1592	2265	4397	3541	2971	2575	6281	1438	4992	5735	3586	6512	1783	735	2041	2435	4295
CQ	3840	6704	5100	1578	4471	1610	2284	4492	3552	3030	2516	6370	1507	5087	5814	3680	6597	1878	751	2094	2502	4377
CR	6129	3942	1982	2624	2567	3707	3982	961	4931	3170	5580	3119	2776	1672	3206	882	3552	1700	3543	3129	2289	1946
CS	6797	3249	2220	2871	2044	4338	4648	973	5621	3864	6175	2463	3401	1718	2524	1490	2867	2228	4098	3800	2316	1364
CT	6722	3317	2212	2815	2072	4263	4574	975	5550	3795	6101	2538	3326	1728	2587	1436	2940	2155	4025	3725	2277	1401
CU	6861	3127	2481	2732	1792	4371	4715	1233	5728	3997	6175	2446	3434	1975	2363	1698	2796	2215	4080	3874	2119	1125
CV	6814	3155	2584	2614	1720	4311	4670	1344	5701	3987	6100	2525	3376	2091	2371	1742	2852	2140	4000	3833	1991	1075
CW	7757	3084	1702	4336	2993	5461	5645	1013	6419	4593	7370	1821	4553	1035	2714	2092	2450	3540	5371	4795	3772	2305
CX	7876	2917	1870	4350	2891	5559	5757	1131	6551	4726	7460	1654	4644	1203	2560	2214	2282	3602	5446	4905	3756	2214
CY	8427	1572	3368	3933	1518	5920	6283	2235	7293	5542	7680	1094	4986	2708	950	3114	1251	3733	5568	5444	3101	1078
CZ	8378	1604	3387	3857	1436	5866	6235	2237	7254	5509	7618	1177	4933	2730	939	3095	1315	3676	5505	5398	3021	995
DA	6875	5151	6056	1935	2929	4579	5238	4939	6530	5560	5402	5469	4069	5697	4324	4756	5377	3285	3754	4785	1790	3346
DB	6835	5157	6029	1896	2928	4538	5197	4916	6489	5520	5363	5465	4028	5673	4328	4726	5378	3248	3713	4744	1762	3337
DC	7337	5309	6555	2487	3192	5093	5757	5413	7048	6109	5818	5752	4610	6172	4524	5279	5602	3837	4257	5326	2305	3686
DD	4721	6736	5942	1659	4417	2749	3416	5154	4652	4188	3158	6641	2643	5825	5845	4504	6756	2650	1899	3259	2477	4510
DE	740	10688	7273	6029	8703	3304	2877	7446	2123	3901	2278	9969	4202	7664	9853	6363	10384	5492	3933	3723	6886	8399
DF	7949	4915	6674	2925	2966	5642	6296	5479	7588	6546	6460	5498	5092	6235	4187	5478	5278	4202	4824	5810	2542	3549
DG	14195	8633	12444	9328	8213	12021	12684	11185	13975	12932	12578	9902	11497	11863	8518	11525	9335	10550	11183	12215	8826	8921
DH	14688	7878	12111	9565	7934	12357	12997	10870	14285	13058	13160	9223	11726	11488	7939	11365	8604	10653	11556	12434	8923	8614
DI	14025	6923	11205	8832	7056	11642	12271	9970	13552	12267	12541	8272	10976	10575	7002	10499	7651	9866	10860	11677	8147	7725
DJ	13331	5637	10049	8054	5993	10873	11475	8835	12737	11350	11935	7000	10144	9405	5783	9437	6366	8972	10131	10827	7293	6630
DK	13530	5729	10184	8249	6153	11066	11666	8976	12926	11527	12140	7098	10332	9537	5904	9593	6459	9154	10328	11013	7481	6782
DL	13709	5841	10325	8427	6311	11243	11842	9121	13100	11695	12322	7214	10506	9676	6037	9748	6571	9325	10507	11186	7655	6935
DM	13116	5484	9864	7840	5793	10658	11261	8646	12524	11141	11720	6843	9931	9223	5609	9239	6214	8761	9916	10615	7080	6434
DN	17836	8642	13414	12543	9996	15297	15842	12364	17041	15462	16575	9927	14476	12742	9212	13210	9274	13217	14636	15105	11684	10477
DO	18491	8897	13597																			

DECIBEL - Main Result

Calculation: 20200824

...continued from previous page

NSA	23	24	25	26	27	28	29	30	31	32	33	34	35	36	37	38	39	40	41	42	43	44
G	4880	5872	4608	7195	1909	5427	6132	6268	7134	6534	4803	7180	879	4109	5725	6122	5887	2950	4704	2866	3186	7698
H	10103	10874	9606	12027	6551	10558	11302	11493	3918	3129	3200	4523	4399	4992	3768	2192	2307	2700	846	3978	7153	5471
I	4499	3332	2695	3713	2972	6134	6328	5635	11730	8433	6565	11897	5160	4474	7013	10425	8230	6160	8681	4900	1775	12500
J	10706	10743	9600	11522	6755	11677	12292	12151	7593	816	1634	8232	5597	3403	857	5868	1427	3638	4386	3705	6608	9185
K	1310	856	1271	2271	4216	2875	2744	1853	12540	11241	9312	12462	6305	7540	10002	11660	10813	8116	10234	7280	4304	12805
L	8545	10213	9064	11678	6853	8111	8908	9562	3738	8226	7430	3273	4889	8073	8324	4099	7372	5477	4429	6561	8144	3286
M	1790	3110	2027	4587	2336	2714	3264	3206	9965	9295	7417	9881	3920	6013	8232	9133	8753	5894	7793	5332	3212	10234
N	2386	3468	2273	4897	1755	3299	3874	3815	9510	8679	6802	9461	3333	5430	7621	8617	8138	5285	7232	4717	2762	9858
O	9940	10678	9412	11818	6352	10428	11165	11337	4142	2971	2957	4731	4231	4741	3545	2420	2135	2478	918	3739	6928	5672
P	11966	12138	10964	12972	8033	12826	13479	13413	7148	955	2883	7864	6586	4868	2339	5492	1608	4522	4405	4939	8016	8837
Q	6751	6514	5427	7258	2958	7987	8485	8164	8964	4803	2940	9309	3314	864	3408	7433	4617	3068	5592	1684	2393	10078
R	11867	11964	10809	12756	7922	12780	13416	13315	7525	931	2757	8230	6592	4638	2091	5851	1736	4550	4672	4840	7831	9201
S	10585	10481	9378	11180	6648	11645	12228	12023	8265	1545	1793	8886	5739	3106	830	6537	2120	3906	4983	3706	6353	9830
T	8658	8339	7299	8960	4833	9878	10388	10069	9047	3462	2061	9532	4639	1177	1970	7371	3588	3481	5567	2505	4268	10400
U	5304	3983	3482	4114	3619	6952	7123	6391	12148	8370	6568	12361	5666	4428	6908	10772	8251	6431	8986	5101	2294	13005
V	1858	1967	2720	2771	5556	2619	2099	1024	13478	12623	10699	13330	7501	8973	11413	12725	12164	9402	11398	8645	5746	13589
W	1883	2187	938	3564	2265	3373	3699	3266	10781	9320	7396	10765	4390	5718	8120	9805	8871	6163	8321	5345	2576	11187
X	3696	1993	3262	1072	6289	4921	4461	3381	14946	13004	11084	14899	8547	9107	11649	13982	12685	10187	12464	9172	5934	15269
Y	12413	14094	12935	15554	10572	11874	12658	13378	3056	9910	9820	2323	8403	11059	10537	4705	9119	8308	6226	9621	11782	1354
Z	8330	9586	8336	10941	5585	8394	9183	9588	3383	5775	4996	3466	3276	5876	5871	2605	4923	3157	2092	4401	6664	4102
AA	5311	6595	5366	7990	2942	5530	6293	6605	6376	6861	5302	6337	1429	4969	6258	5564	6131	3251	4400	3583	4258	6779
AB	7071	7965	6692	9210	3714	7541	8273	8455	5341	4791	3420	5559	1407	3798	4378	4085	4030	1308	2527	2289	4619	6256
AC	7311	8176	6904	9407	3905	7792	8524	8699	5220	4565	3246	5471	1627	3758	4199	3912	3795	1157	2306	2266	4762	6195
AD	6033	6358	5124	7405	2107	6987	7594	7481	7618	4980	3083	7871	1574	2041	3908	6232	4504	1967	4470	998	2487	8574
AE	6989	6566	5551	7191	3344	8306	8763	8375	9521	4998	3227	9883	3913	1086	3541	7964	4909	3626	6118	2258	2543	10663
AF	5974	4450	4138	4303	4460	7647	7763	6968	12880	8766	7038	13117	6458	4895	7282	11464	8720	7095	9657	5736	3118	13781
AG	5082	2960	3637	1823	5863	6689	6477	5450	14805	11641	9806	14902	8194	7684	10189	13592	11481	9402	11892	8168	4955	15424
AH	5118	7199	6412	8683	5851	4030	4748	5645	8338	10878	9389	7909	5474	8907	10347	8317	10106	7314	7839	7625	7179	7838
AI	11558	12757	11495	14070	8612	11588	12382	12814	1004	5969	6239	1777	6269	7890	6802	902	5233	5278	2749	6664	9520	2735
AJ	9941	11163	9906	12495	7071	9986	10778	11199	1909	5640	5409	2238	4729	6760	6138	1091	4810	4031	1826	5404	8051	3096
AK	8864	10090	8835	11431	6035	8939	9728	10129	2912	5584	4986	3075	3702	6055	5817	2060	4731	3305	1767	4620	7066	3791
AL	10593	11153	9905	12204	6843	11205	11919	12016	4932	2001	2578	5592	4916	4631	2897	3214	1245	1936	1995	3949	7228	6555
AM	8325	8432	7259	9301	4375	9314	9918	9771	7386	2759	833	7853	3416	1391	1581	5732	2488	1854	3906	1350	4318	8716
AN	4267	2910	2433	3195	3271	5936	6069	5315	12128	8957	7084	12272	5532	5000	7539	10857	8747	6627	9132	5391	2195	12852
AO	1467	2552	1478	4026	2487	2719	3159	2914	10483	9546	7644	10414	4317	6116	8423	9612	9040	6230	8226	5563	3128	10781
AP	3971	2261	3526	1216	6541	5173	4694	3617	15219	13219	11303	15174	8808	9311	11855	14248	12911	10433	12722	9404	6155	15546
AQ	3453	2144	1618	2695	3090	5131	5247	4492	12035	9348	7440	12127	5428	5429	7974	10851	9070	6752	9187	5611	2329	12654
AR	4428	2838	2603	2873	3792	6117	6184	5361	12663	9418	7561	12805	6064	5457	7985	11392	9321	7154	9664	5906	2729	13379
AS	5080	3057	4171	1560	6933	6455	6047	4966	15822	13177	11302	15844	9269	9218	11752	14727	12959	10694	13105	9543	6265	16287
AT	6621	8307	7181	9782	5192	6245	7045	7659	5323	8151	6946	5015	3593	7082	7900	5161	7328	4839	4775	5602	6545	5171
AU	2993	4739	3719	6236	3017	2959	3729	4132	8684	9143	7396	8511	3475	6434	8302	8066	8486	5546	6971	5393	4281	8772
AV	6064	7088	5822	8396	2992	6480	7218	7428	5959	5760	4226	6054	730	4111	5186	4902	5034	2154	3511	2642	4110	6634
AW	7803	8007	6809	8941	3861	8749	9366	9251	7160	3219	1308	7579	2811	1432	2162	5558	2821	1393	3711	778	3939	8410
AX	9796	9613	8532	10283	5885	10916	11473	11226	8528	2249	1562	9095	5215	2260	875	6806	2587	3583	5119	3090	5499	10014
AY	7564	5456	6010	4265	7701	9187	8976	7941	16466	12361	10696	16653	9920	8562	10869	15103	12370	10756	13314	9410	6527	17262
AZ	11069	12723	11559	14180	9196	10589	11380	12068	2538	8988	8706	1751	7047	9815	9477	3905	8165	7073	5178	8352	10416	1066
BA	9907	11610	10470	13080	8242	9386	10174	10877	3201	8892	8353	2523	6206	9226	9192	4148	8045	6538	5020	7727	9513	2174
BB	3266	5396	4940	6788	5593	1777	2390	3383	10466	11862	10145	10119	6193	9155	11056	10195	11178	8246	9386	8150	6677	10142
BC	3382	5460	4706	6942	4611	2464	3244	4023	9187	10550	8873	8881	4898	8023	9800	8850	9849	6929	8016	6923	5833	8970
BD	4564	6406	5392	7906	4175	4094	4894	5523	7437	9112	7567	7162	3629	7066	8520	7084	8363	5515	6317	5777	5547	7314
BE	6248	7759	6574	9199	4327	6130	6927	7414	5402	7317	6015	5237	2595	6080	6975	4913	6515	3900	4190	4605	5648	5564
BF	2103	3288	2137	4741	2025	3022	3587	3527	9724	8969	7092	9658	3609	5703	7908	8860	8428	5572	7496	5007	2965	10034
BG	9710	10428	9163	11563	6101	10220	10953	11111	4317	2918	2756	4882	4000	4496	3388	2608	2069	2220	961	3479	6669	5812
BH	2730	2952	1684	4199	1388	4080	4497	4147	10140	8417	6492	10173	3625	4828	7216	9080	7977	5305	7535	4446	1766	10652
BI	5304	4901	3851	5646	1949	6678	7098	6677	9829	6398	4499	10065	3460	2487	5026	8439	6149	4105	6655	2806	848	10739
BJ	3945	2687	2117																			

DECIBEL - Main Result

Calculation: 20200824

...continued from previous page

WTG		23	24	25	26	27	28	29	30	31	32	33	34	35	36	37	38	39	40	41	42	43	44
NSA	23	24	25	26	27	28	29	30	31	32	33	34	35	36	37	38	39	40	41	42	43	44	
CF	7780	7282	6307	7825	4142	9108	9561	9157	9727	4620	3031	10144	4524	1150	3129	8110	4664	3902	6268	2631	3327	10964	
CG	2563	4494	4398	5728	5914	912	993	2074	11880	12658	10846	11575	7028	9588	11710	11489	12035	9100	10527	8783	6750	11644	
CH	1073	1725	2119	2914	4805	2160	1866	903	12695	11882	9963	12557	6711	8285	10697	11931	11407	8625	10604	7899	5088	12831	
CI	7495	5440	5846	4397	7279	9154	9004	8000	15945	11690	10049	16156	9444	7926	10197	14551	11718	10186	12748	8827	6049	16789	
CJ	1568	1933	2554	2890	5319	2364	1896	817	13184	12393	10473	13034	7233	8774	11199	12439	11924	9147	11122	8412	5561	13292	
CK	5503	3683	4902	2306	7808	6685	6168	5102	16617	14204	12318	16603	10123	10250	12790	15583	13965	11631	14000	10518	7236	17004	
CL	3427	5497	4729	6983	4585	2532	3315	4086	9112	10490	8818	8806	4841	7981	9746	8775	9787	6869	7945	6873	5816	8897	
CM	7218	5348	5435	4657	6298	8912	8888	7965	14731	10273	8660	14981	8332	6552	8780	13289	10321	8908	11467	7533	4980	15652	
CN	4208	2670	2379	2812	3611	5895	5973	5165	12506	9380	7510	12638	5901	5422	7959	11253	9173	7041	9537	5813	2598	13203	
CO	4252	2697	2424	2811	3659	5940	6014	5201	12550	9401	7533	12683	5946	5441	7977	11293	9198	7077	9576	5844	2636	13250	
CP	4128	2638	2296	2845	3495	5813	5903	5108	12395	9310	7434	12524	5788	5354	7894	11146	9094	6943	9435	5722	2495	13087	
CQ	4221	2710	2389	2874	3561	5906	5993	5192	12451	9314	7443	12584	5846	5355	7893	11194	9107	6978	9476	5748	2537	13152	
CR	1488	2562	1481	4035	2465	2739	3172	2936	10468	9524	7622	10401	4297	6094	8401	9595	9018	6209	8207	5542	3108	10768	
CS	1981	3255	2137	4722	2180	2867	3436	3396	9790	9114	7239	9713	3729	5858	8059	8948	8567	5704	7603	5154	3110	10075	
CT	1944	3185	2063	4650	2174	2874	3429	3366	9852	9131	7252	9778	3767	5852	8067	9002	8590	5734	7649	5167	3076	10144	
CU	2222	3377	2209	4823	1925	3125	3698	3646	9621	8854	6978	9561	3491	5602	7797	8749	8311	5454	7380	4893	2899	9944	
CV	2290	3362	2172	4794	1808	3240	3801	3723	9617	8762	6881	9568	3435	5486	7694	8724	8226	5379	7337	4795	2771	9962	
CW	2122	4075	3242	5575	3465	1956	2715	3140	9678	10013	8216	9483	4381	7073	9095	9083	9387	6452	7976	6167	4548	9708	
CX	2274	4199	3333	5701	3403	2112	2877	3308	9510	9886	8098	9315	4244	6988	8983	8917	9253	6317	7817	6057	4521	9543	
CY	3472	4932	3779	6390	2346	3739	4479	4753	8160	8272	6521	8054	2610	5601	7428	7415	7623	4683	6216	4524	3694	8400	
CZ	3468	4896	3735	6350	2262	3774	4507	4763	8173	8216	6459	8075	2560	5524	7363	7411	7572	4633	6195	4456	3611	8430	
DA	5436	5021	3979	5750	2054	6808	7229	6808	9817	6298	4405	10063	3489	2375	4918	8412	6060	4065	6620	2750	979	10746	
DB	5405	4982	3943	5709	2045	6782	7200	6775	9847	6339	4446	10091	3509	2416	4959	8445	6101	4161	6655	2788	949	10772	
DC	5958	5574	4529	6281	2410	7295	7738	7342	9596	5783	3909	9881	3473	1838	4385	8138	5578	3760	6321	2396	1511	10599	
DD	5110	3831	3293	4025	3436	6753	6933	6212	12018	8352	6531	12221	5513	4399	6899	10657	8212	6330	8880	5014	2128	12856	
DE	6458	4378	5386	2884	7919	7869	7467	6387	16863	13723	11907	16931	10261	9775	12260	15685	13586	11520	14001	10289	7070	17419	
DF	6151	5982	4865	6793	2352	7378	7878	7569	8932	5251	3343	9228	2943	1414	3908	7464	4989	3085	5646	1722	1846	9958	
DG	12151	12349	11170	13195	8225	12990	13649	13597	7057	1158	3089	7784	6733	5098	2578	5422	1727	4663	4412	5131	8232	8757	
DH	11944	12446	11208	13452	8156	12570	13283	13370	5338	2091	3499	6084	6279	5642	3466	3759	1825	4276	3109	5181	8456	7055	
DI	11065	11647	10398	12704	7334	11648	12368	12483	4791	2170	3026	5490	5374	5108	3252	3111	1542	3421	2183	4449	7728	6461	
DJ	9972	10720	9453	11864	6394	10450	11189	11367	4080	3019	3021	4672	4264	4803	3607	2357	2186	2528	882	3795	6979	5613	
DK	10121	10896	9628	12050	6573	10573	11317	11510	3894	3146	3227	4501	4418	5019	3792	2167	2327	2725	843	4004	7177	5449	
DL	10272	11064	9795	12223	6742	10706	11453	11657	3761	3233	3389	4384	4574	5199	3933	2032	2429	2903	885	4187	7356	5338	
DM	9777	10511	9245	11651	6185	10273	11008	11176	4217	2978	2859	4789	4068	4604	3482	2505	2133	2313	894	3581	6764	5721	
DN	13605	14825	13563	16136	10670	13576	14374	14842	2135	7207	7883	2677	8329	9713	8292	2884	6607	7218	4656	8588	11545	3238	
DO	13892	15297	14060	16674	11314	13663	14464	15036	2369	8662	9138	2414	8981	10820	9642	3832	8002	8187	5678	9574	12320	2446	
DP	13198	14749	13546	16174	10975	12812	13607	14257	2439	9316	9503	1993	8699	10974	10122	4162	8580	8249	5908	9617	12092	1434	
DQ	13861	15299	14068	16687	11356	13596	14396	14987	2443	9881	9309	2378	9030	10956	9833	3974	8207	8301	5815	9688	12385	2293	
DR	12945	14617	13453	16074	11060	12411	13196	13915	3228	10143	10141	2563	8869	11447	10830	4930	9369	8695	6534	10026	12255	1644	
DS	11404	13183	12071	14665	9921	10745	11516	12287	3746	10216	9860	2951	7894	10856	10657	5157	9387	8139	6382	9368	11200	2094	
DT	10320	12085	10971	13566	8838	9703	10482	11230	3603	9563	9048	2857	6853	9914	9884	4724	8718	7233	5692	8413	10129	2278	
DU	8769	9968	8711	11301	5890	8876	9661	10046	3059	5445	4816	3243	3553	5875	5652	2123	4590	3125	1659	4441	6907	3969	
DV	5971	6273	5043	7314	2036	6942	7543	7418	7713	5045	3141	7964	1626	2030	3954	6329	4580	2063	4567	1060	2391	8663	
DW	6161	6480	5249	7521	2234	7111	7720	7609	7557	4851	2956	7822	1616	1962	3784	6155	4377	1865	4383	870	2589	8535	
DX	7268	8122	6849	9349	3846	7761	8490	8658	5287	4559	3217	5537	1577	3700	4172	3975	3795	1119	2360	2205	4697	6261	
DY	7243	8105	6833	9336	3834	7730	8461	8632	5284	4598	3255	5529	1557	3725	4210	3982	3834	1155	2377	2228	4695	6248	
DZ	4936	5913	4648	7231	1921	5490	6195	6326	7102	6469	4739	7154	815	4057	5662	6078	5823	2885	4651	2806	3183	7679	
EA	8248	8769	7520	9840	4458	8960	9645	9681	5787	3048	1694	6219	2668	2807	2631	4187	2348	595	2339	1673	4896	7067	

WTG

NSA	45	46	47	48	49	50	51	52	53	54	55	56	57	58	59	60
A	7234	9659	11908	13663	15109	11159	11356	12915	8043	9715	16540	16885	17369	15317	16546	13024
B	8359	10777	13139	14705	15921	12252	12709	13912	9296	10715	17460	17738	18258	16388	17629	14395
C	7839	10260	12484	14272	15740	11763	11897	13531	8620	10333	17163	17513	17994	15921	17147	13556
D	8394	10819	13149	14773	16049	12303	12678	13991	9294	10790	17563	17858	18369	16449	17687	14359
E	11116	9055	8274	5664	3071	7758	9733	5869	10926	8572	3006	2147	2449	5111	4987	9424
F	3545	4162	6489	6758	7189	4970	7080	5860	4516	3398	8926	9044	9630	8412	9623	8493
G	2414	2444	4802	5381	6354	3333	5363	4510	3070	1699	7905	8163	8688	7		

DECIBEL - Main Result

Calculation: 20200824

...continued from previous page

WTG																
NSA	45	46	47	48	49	50	51	52	53	54	55	56	57	58	59	60
W	3557	5528	8065	9047	9924	6813	8164	8187	4793	5143	11559	11764	12317	10747	11990	9797
X	7276	9541	12047	13214	14054	10914	11912	12361	8412	9268	15726	15903	16470	14914	16159	13598
Y	10666	8661	8024	5437	2739	7410	9492	5558	10523	8140	3044	2206	2646	5061	5084	9283
Z	5461	3434	3576	2173	2674	2377	4952	1360	5281	2904	4157	4428	4937	3663	4827	5502
AA	3471	2916	4905	4930	5496	3325	5731	4031	3985	2009	7159	7337	7897	6580	7792	6975
AB	3338	1331	2781	3269	4809	1205	3706	2453	3122	769	6070	6474	6914	4969	6215	4856
AC	3452	1298	2534	3077	4740	952	3494	2287	3146	919	5937	6368	6791	4772	6018	4613
AD	1095	1334	3776	5345	7128	2831	3810	4643	1023	1578	8323	8771	9185	6989	8218	5431
AE	1978	3211	4823	7044	9201	4575	4076	6510	1374	3829	10162	10713	11050	8533	9688	5734
AF	4224	6532	8567	10561	12353	8030	7886	9898	4750	6795	13583	14030	14448	12151	13350	9532
AG	6348	8774	11106	12738	14082	10261	10661	11965	7255	8762	15558	15875	16374	14410	15647	12347
AH	7014	7005	8805	8027	7147	7219	9781	7201	7858	6096	9064	8845	9512	9382	10410	10894
AI	8187	5819	4348	1823	1910	4329	5741	2474	7649	5675	1343	2089	2233	1041	1733	5276
AJ	6763	4490	3631	1184	1678	3090	5105	1166	6365	4203	2639	3069	3481	2154	3248	5136
AK	5819	3667	3417	1681	2334	2435	4849	966	5541	3247	3673	4003	4480	3120	4282	5236
AL	5833	3569	1033	2514	5281	2489	1870	2807	4847	4093	5308	6078	6169	3249	4196	1481
AM	3043	1909	2392	4820	7269	2618	1675	4459	1842	2828	7960	8590	8853	6177	7288	3369
AN	3575	6003	8330	9990	11470	7497	7936	9238	4490	6039	12868	13228	13701	11652	12885	9628
AO	3899	5615	8140	8899	9568	6792	8374	8019	5130	5114	11266	11420	11994	10589	11823	9965
AP	7507	9787	12288	13476	14329	11168	12134	12626	8633	9525	15999	16179	16744	15177	16422	13821
AQ	3726	6112	8538	10012	11307	7571	8279	9221	4783	6022	12791	13101	13603	11697	12939	9972
AR	4104	6532	8842	10524	12000	8028	8415	9774	4992	6574	13403	13761	14236	12184	13416	10105
AS	7666	10051	12476	13910	15007	11500	12152	13095	8683	9918	16591	16837	17373	15603	16848	13845
AT	5777	4750	5976	4884	4193	4465	7155	4085	6176	3864	6084	6006	6647	6228	7281	8028
AU	4332	5053	7353	7482	7666	5816	7971	6581	5361	4276	9468	9518	10128	9104	10295	9372
AV	3025	1866	3827	4163	5246	2267	4632	3289	3221	946	6722	7021	7523	5857	7095	5885
AW	2599	1330	2420	4637	6953	2265	2068	4177	1486	2242	7772	8361	8664	6098	7256	3737
AX	4452	3716	3337	5954	8613	4183	1922	5810	3227	4635	8998	9716	9879	7007	7958	3122
AY	7800	10175	12253	14209	15863	11680	11537	13515	8429	10356	17187	17592	18038	15819	17025	13157
AZ	9322	7385	6982	4489	1727	6208	8455	4444	9230	6819	2884	2263	2905	4515	4873	8437
BA	8503	6761	6770	4508	2061	5756	8218	4221	8543	6093	3745	3292	3962	4968	5573	8444
BB	6996	7784	9991	9755	9318	8417	10698	8873	8086	6969	11222	11088	11744	11263	12377	12045
BC	5937	6493	8644	8392	8064	7064	9395	7508	6950	5653	9953	9865	10512	9916	11044	10707
BD	5229	5175	7097	6647	6334	5503	7992	5771	6023	4275	8208	8156	8793	8151	9274	9182
BE	4808	3769	5184	4470	4390	3622	6278	3602	5173	2872	6185	6245	6847	5977	7118	7264
BF	3476	4973	7478	8154	8812	6092	7791	7271	4675	4418	10507	10663	11236	9841	11073	9349
BG	5267	2863	878	1738	4444	1517	2340	1758	4453	3194	4828	5512	5719	3012	4163	2580
BH	2653	4664	7198	8293	9341	5993	7264	7452	3890	4339	10910	11162	11692	9994	11239	8903
BI	1178	3512	5736	7545	9305	5018	5345	6856	1883	3744	10537	10976	11398	9168	10385	7039
BJ	3449	5868	8240	9828	11244	7351	7905	9061	4429	5857	12672	13015	13498	11499	12736	9599
BK	2835	2949	3848	6293	8691	4007	2864	5899	1702	3781	9433	10055	10327	7646	8742	4465
BL	3233	5627	7830	9657	11316	7134	7317	8950	3965	5790	12619	13029	13471	11287	12505	9000
BM	6910	9175	11680	12854	13715	10550	11548	12003	8049	8905	15379	15563	16127	14555	15800	13233
BN	3812	6237	8588	10208	11638	7725	8216	9445	4758	6243	13061	13407	13889	11876	13112	9909
BO	10814	8612	7521	4914	2705	7220	8945	5286	10490	8242	1936	1138	1231	4084	3802	8473
BP	7663	5237	3148	1618	3586	3766	4341	2509	6890	5386	2987	3821	3792	840	1750	3571
BQ	4957	5985	8349	8534	8656	6832	8896	7634	6082	5253	10480	10502	11121	10155	11343	10343
BR	1072	1551	4073	5443	7060	2979	4219	4691	1437	1511	8344	8751	9193	7115	8354	5811
BS	1654	4043	6292	8072	9771	5549	5891	7368	2439	4223	11042	11464	11897	9704	10925	7585
BT	3783	2931	2846	5435	8023	3486	1607	5205	2546	3851	8536	9220	9425	6621	7645	3130
BU	4946	7302	9389	11335	13053	8805	8730	10652	5554	7515	14331	14756	15189	12942	14148	10378
BV	5568	7916	9975	11949	13677	9418	9280	11271	6153	8137	14951	15378	15810	13549	14751	10916
BW	9719	7342	5711	3318	2688	5845	7025	4008	9158	7209	821	1530	1171	1939	1402	6297
BX	4975	4560	6325	5781	5529	4735	7294	4908	5621	3642	7383	7366	7994	7283	8411	8414
BY	5387	3190	2994	1639	2806	1944	4403	767	5068	2818	4037	4424	4870	3238	4447	4884
BZ	3095	1748	3625	3962	5113	2059	4460	3093	3208	838	6558	6874	7366	5658	6898	5689
CA	4390	2042	1993	2067	4021	685	3275	1338	3910	1930	5025	5522	5898	3755	5001	4049
CB	4022	1680	873	2818	5289	885	1815	2469	3172	2236	5960	6580	6853	4266	5438	2886
CC	6530	4291	1753	2794	5495	3199	2310	3267	5512	4817	5264	6076	6088	3130	3903	1277
CD	881	2233	4761	6045	7506	3625	4882	5262	1810	2058	8875	9242	9709	7730	8973	6490
CE	3893	1760	961	3336	5870	1438	1301	3052	2909	2500	6471	7117	7364	4688	5819	2628
CF	2752	3597	4802	7191	9503	4820	3838	6744	1936	4327	10331	10929	11224	8588	9699	5419
CG	7364	8572	10934	10979	10759	9404	11479	10084	8547	7842	12647	12557	13205	12548	13699	12933
CH	6134	8005	10535	11249	11711	9190	10719	10360	7370	7512	13480	13565	14166	12928	14153	12334
CI	7274	9618	11640	13650	15377	11119	10886	12976	7841	9842	16657	17083	17516	15243	16440	12493

To be continued on next page...

DECIBEL - Main Result

Calculation: 20200824

...continued from previous page

	WTG															
NSA	45	46	47	48	49	50	51	52	53	54	55	56	57	58	59	60
CJ	6636	8526	11057	11763	12189	9712	11233	10873	7870	8034	13969	14042	14647	13439	14663	12851
CK	8629	10986	13441	14785	15760	12413	13165	13953	9681	10803	17393	17603	18156	16483	17729	14858
CL	5903	6436	8579	8318	7989	6998	9336	7434	6909	5593	9877	9791	10437	9841	10968	10643
CM	6092	8364	10291	12379	14222	9852	9490	11739	6543	8661	15426	15887	16295	13944	15126	11083
CN	3987	6414	8752	10391	11830	7904	8361	9631	4915	6429	13250	13598	14079	12057	13292	10054
CO	4023	6450	8784	10431	11876	7942	8385	9672	4943	6471	13294	13643	14123	12096	13330	10077
CP	3889	6314	8662	10286	11715	7802	8285	9524	4830	6321	13140	13485	13967	11954	13189	9978
CQ	3925	6352	8688	10331	11777	7843	8295	9573	4849	6371	13194	13544	14023	11996	13230	9987
CR	3877	5593	8119	8881	9554	6772	8352	8001	5108	5094	11251	11406	11980	10571	11805	9943
CS	3631	5109	7608	8251	8867	6212	7935	7366	4829	4541	10574	10719	11296	9935	11165	9488
CT	3624	5135	7639	8302	8932	6250	7952	7417	4827	4577	10636	10784	11360	9987	11218	9511
CU	3376	4855	7359	8041	8716	5974	7675	7159	4570	4300	10404	10566	11136	9729	10961	9231
CV	3259	4776	7287	8008	8723	5915	7584	7128	4457	4239	10399	10571	11137	9698	10933	9148
CW	4885	5924	8294	8497	8641	6780	8834	7597	6011	5197	10461	10488	11106	10121	11311	10285
CX	4811	5795	8152	8334	8473	6633	8709	7433	5923	5058	10292	10320	10938	9956	11145	10149
CY	3556	4181	6509	6779	7207	4991	7099	5881	4529	3418	8945	9062	9648	8433	9644	8514
CZ	3473	4124	6466	6767	7228	4955	7043	5870	4452	3372	8958	9082	9666	8425	9639	8465
DA	1195	3481	5671	7514	9308	4985	5253	6837	1810	3745	10520	10969	11384	9129	10343	6947
DB	1217	3515	5710	7549	9335	5019	5294	6868	1849	3772	10552	10998	11415	9165	10379	6988
DC	1231	3217	5265	7230	9149	4701	4762	6594	1413	3607	10281	10764	11155	8811	10010	6453
DD	3349	5736	7920	9767	11442	7242	7387	9065	4056	5911	12737	13150	13590	11393	12609	9067
DE	8467	10890	13227	14839	16103	12373	12762	14055	9373	10854	17622	17913	18427	16517	17756	14443
DF	933	2549	4611	6555	8505	4028	4187	5926	747	2989	9613	10103	10488	8137	9337	5881
DG	6952	5177	3010	4859	7582	4592	2312	5224	5759	5938	7281	8112	8070	5133	5706	947
DH	7078	4896	2367	3326	5948	3852	2657	3873	6017	5455	5530	6367	6313	3383	3969	1208
DI	6333	4057	1528	2527	5251	2920	2269	2970	5345	4553	5101	5900	5940	2988	3839	1470
DJ	5578	3169	1128	1525	4274	1787	2549	1696	4769	3466	4564	5267	5452	2707	3849	2591
DK	5777	3363	1333	1364	4128	1953	2732	1638	4980	3629	4364	5077	5250	2492	3634	2667
DL	5957	3540	1497	1270	4039	2119	2872	1645	5163	3789	4213	4937	5097	2316	3453	2711
DM	5363	2955	976	1642	4360	1586	2430	1701	4557	3265	4723	5412	5614	2903	4056	2611
DN	10193	7792	6011	3759	3340	6287	7258	4512	9577	7714	1454	2050	1535	2209	1283	6390
DO	11025	8704	7244	4752	3257	7234	8588	5327	10555	8471	1640	1414	806	3516	2871	7880
DP	10877	8690	7633	5023	2755	7307	9062	5376	10569	8306	2075	1260	1384	4222	3954	8607
DQ	11104	8805	7415	4891	3226	7348	8777	5428	10665	8542	1752	1371	866	3725	3139	8109
DR	11119	9071	8318	5711	3096	7784	9779	5901	10941	8579	3085	2226	2542	5182	5074	9485
DS	10190	8400	8179	5725	2974	7312	9649	5625	10206	7762	3987	3249	3815	5749	6024	9680
DT	9150	7448	7453	5145	2564	6452	8906	4899	9220	6767	4046	3470	4117	5479	5977	9096
DU	5653	3488	3268	1664	2510	2256	4691	880	5363	3080	3814	4164	4630	3170	4351	5116
DV	997	1432	3866	5443	7218	2929	3878	4739	991	1664	8419	8865	9281	7087	8316	5506
DW	1189	1241	3659	5264	7085	2744	3682	4574	973	1553	8258	8715	9123	6902	8128	5304
DX	3385	1237	2546	3137	4806	974	3480	2351	3081	857	6003	6435	6858	4831	6077	4620
DY	3388	1260	2582	3148	4795	1007	3519	2355	3097	849	6002	6429	6855	4843	6089	4657
DZ	2385	2379	4738	5333	6330	3273	5298	4464	3021	1636	7871	8136	8657	7029	8269	6718
EA	3492	1190	1353	3265	5616	968	1929	2817	2650	1866	6398	6989	7290	4767	5951	3238